

20/00520/FUL

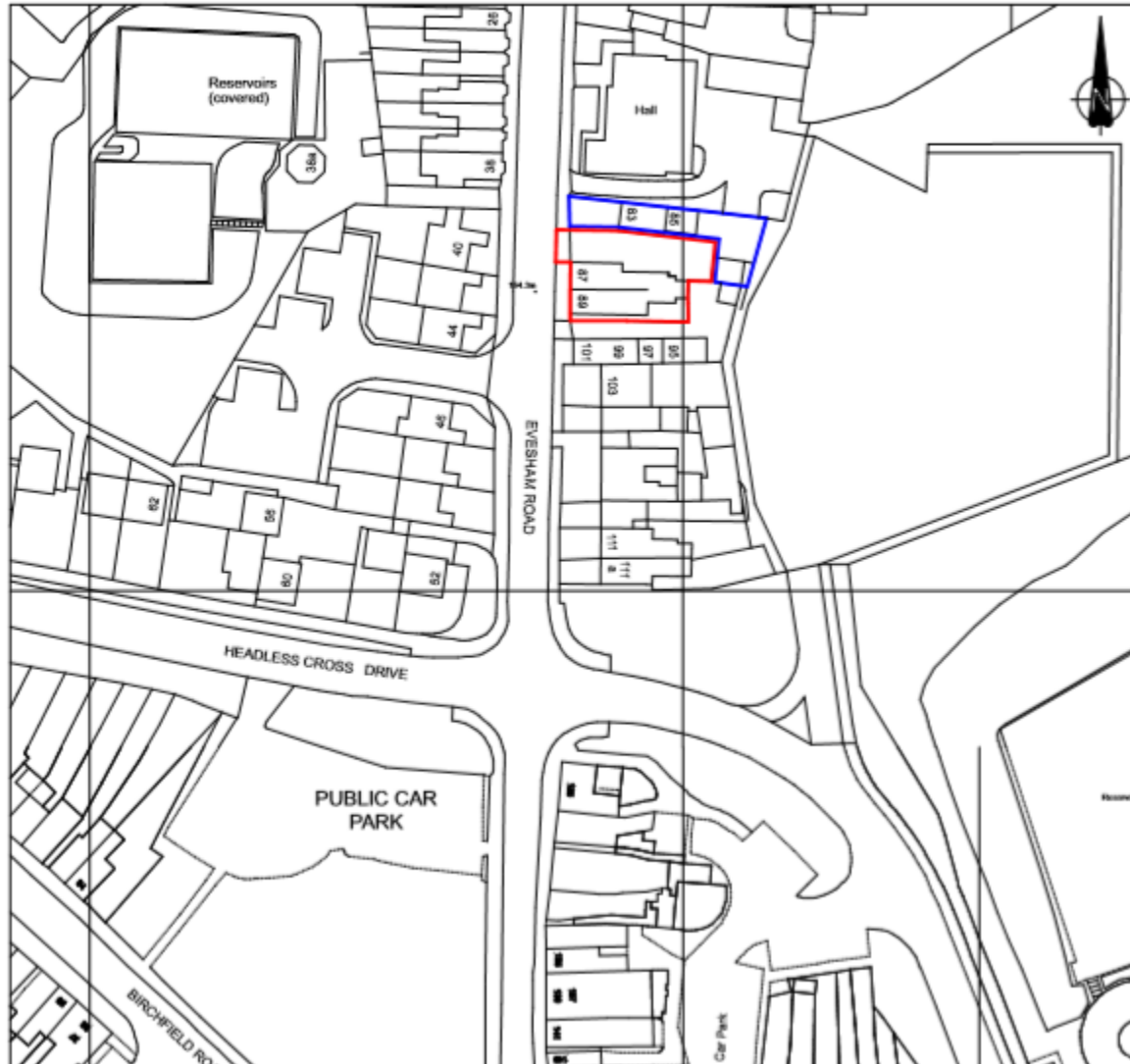
87-89 Evesham Road

Redditch

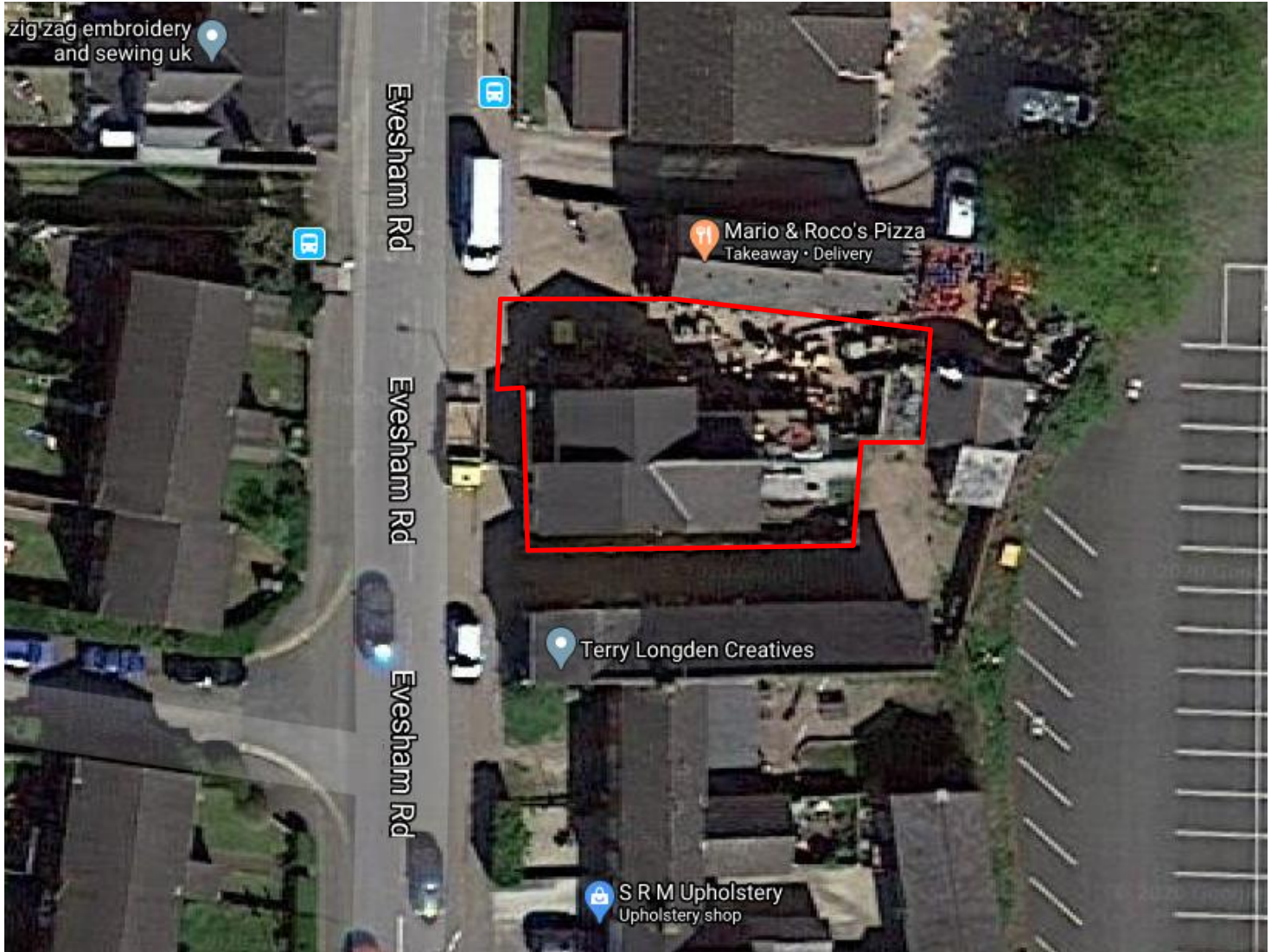
Retrospective planning application for conversion of former plant hire sales and service premises and associated yard, to one retail unit and one beauty / hair dressing salon

Recommendation: Approve

# Site Location



# Satellite View



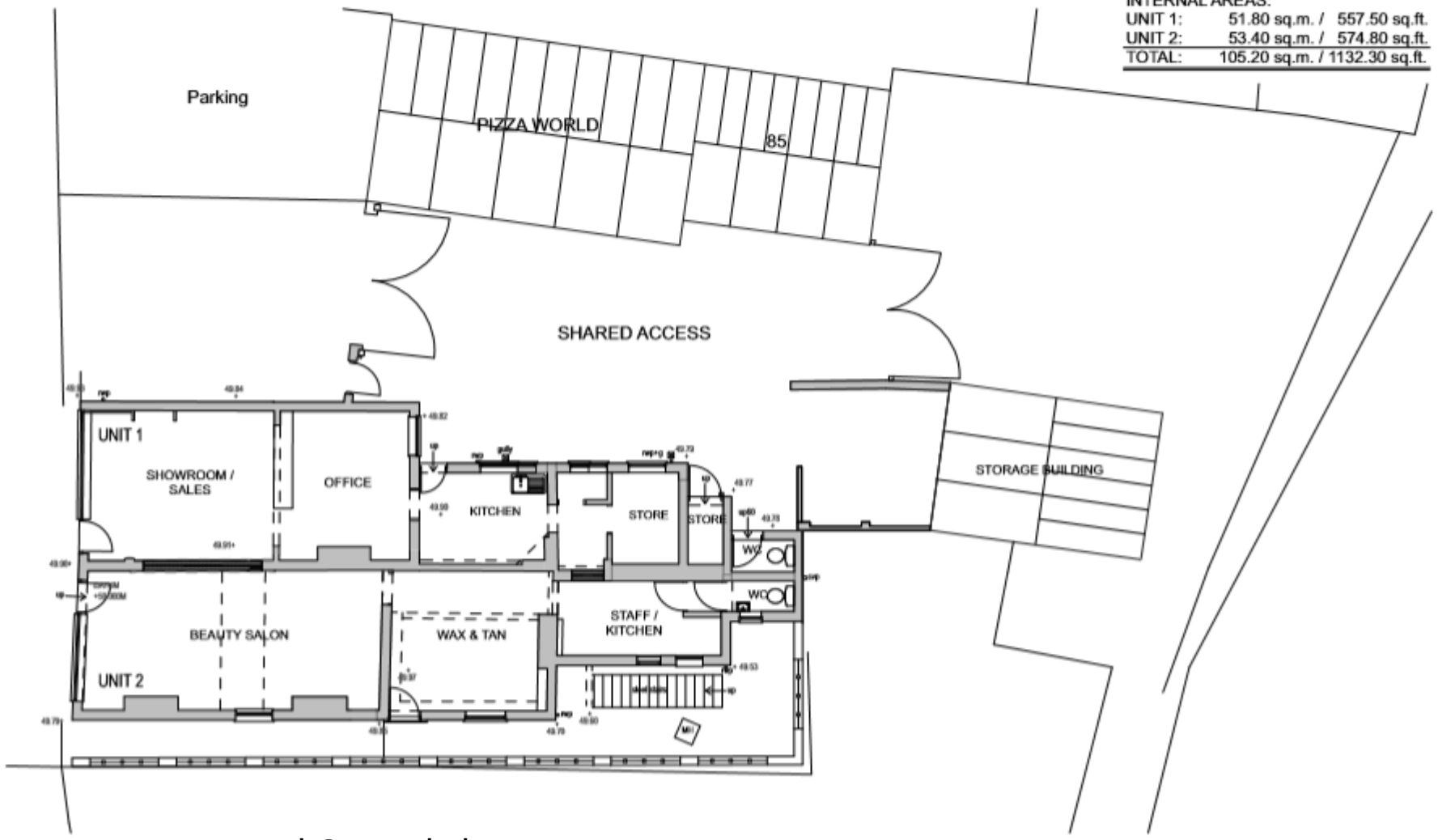


Previous Use



New Use

INTERNAL AREAS:	
UNIT 1:	51.80 sq.m. / 557.50 sq.ft.
UNIT 2:	53.40 sq.m. / 574.80 sq.ft.
<b>TOTAL:</b>	<b>105.20 sq.m. / 1132.30 sq.ft.</b>



Proposed Ground Floor